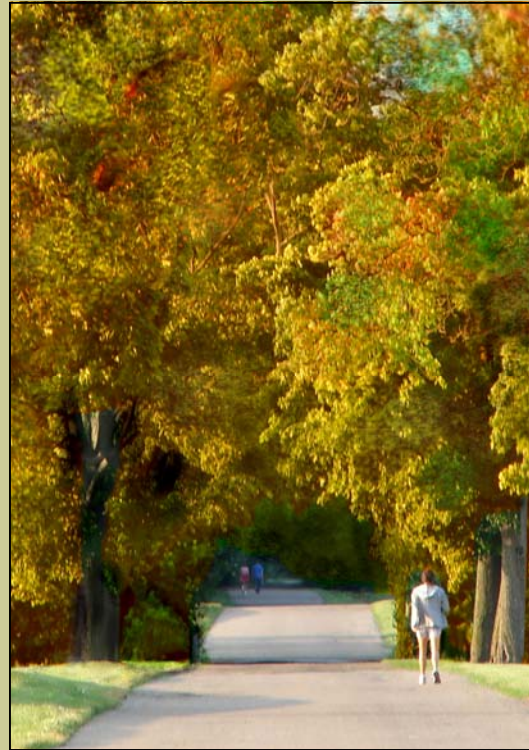


The Academy Preserve



This serene space will be a source of inspiration to the community, a haven to connect with nature.

Our vision for this beautiful property is a permanent natural, green space. We envision the preservation and enhancement of the natural ecology as well as environmentally friendly agricultural areas, education for sustainable living, and passive recreation.

In early September 2006, a small determined group of neighbors along with the Monroe County Land Conservancy began the process to preserve the beautiful open land and forest behind St. Mary's Academy.

In December 2008, the State of Michigan's Natural Resources Trust Fund Board awarded the project a grant worth about \$2.2 million to cover 75% of the purchase of the property. The Friends of the Academy Preserve are raising the required match which is approximately \$700,000. Generous donations have been received including a \$200,000 challenge grant from the DTE Energy Foundation. Many other companies, foundations, and citizens have pledged contributions to achieve the vision of preserving this rare and valuable piece of land.

This project is a once-in-a-lifetime opportunity to preserve a large tract of land in the center of an urban area. Please consider supporting it in any way you can.

The four main goals for the preservation and management of The Academy Preserve are outlined below:

Conservation

- Preservation of natural areas
- Protection of wildlife habitat
- Control of invasive non-native plant species



Education

- Environmental education and interpretation
- Agricultural education
- Nature appreciation

Recreation

- Trails, bike paths, and nature walks
- River access
- Accessibility to all
- Linkage to regional greenway network



Agriculture

- Community supported agriculture
- Locally produced food
- Urban agricultural demonstration plots

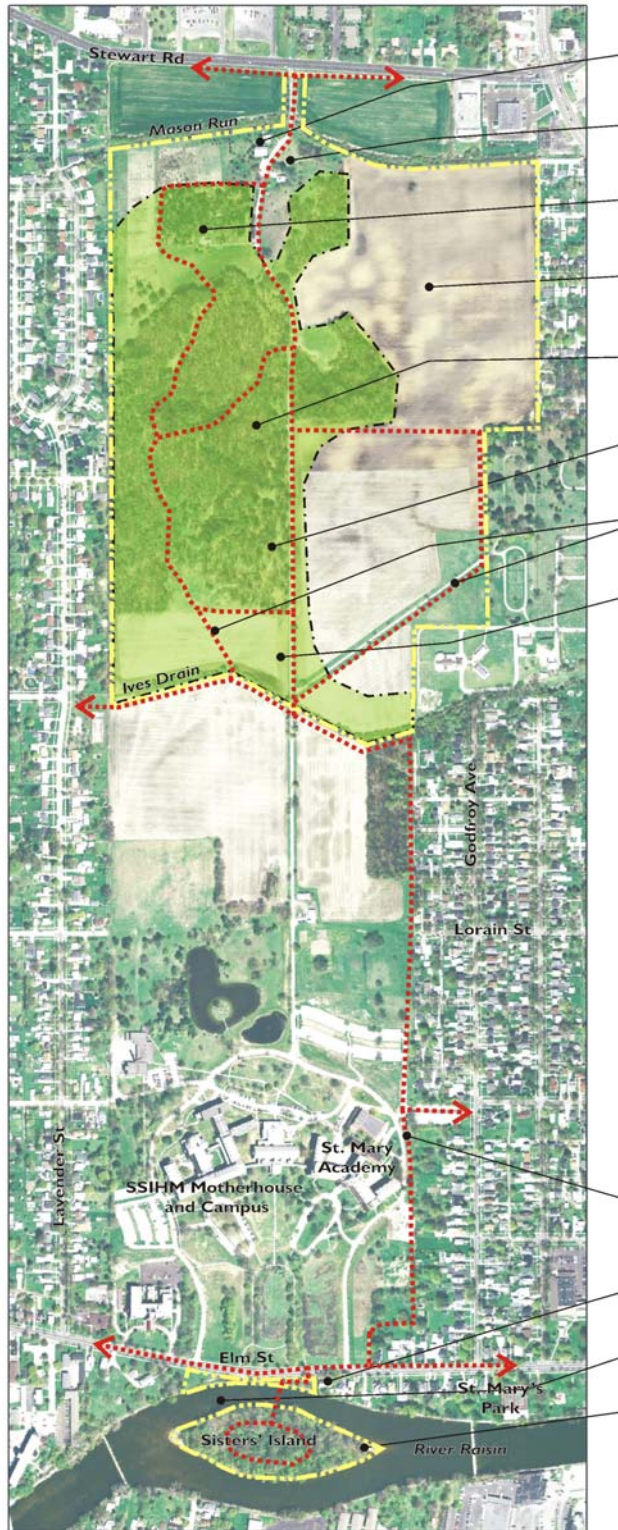
*The Vision for
The Academy Preserve*

*a place of peace and tranquility
a jewel to be preserved for
generations to come
a refuge to experience nature's beauty
a model for sustainable open space
preservation in an urban setting*

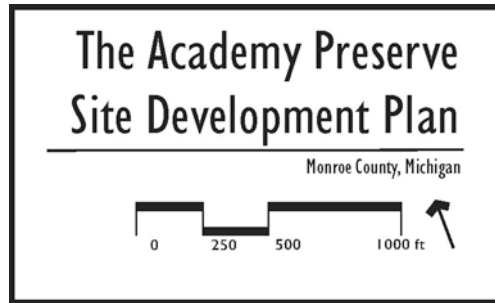


*“The Academy Preserve will be a
valuable asset for the future of Monroe,
giving it another quality of life feature
–the kind that attract people and
development to a community.”*

The Monroe Evening News



- “Visitation Barn” to remain as interpretive center
- Proposed vehicular parking and access
- “Hermitage” to be converted to wildlife viewing facility
- Farmland to be managed as sustainable agricultural areas
- Forested areas to be managed as natural habitat
- Oak openings to be managed as natural habitat
- Pathways and pedestrian circulation
- Lake plain prairie to be restored



- Easement for pedestrian access
- Riverfront area to be managed for river access, fishing, and shoreline habitat
- Pedestrian bridge to island
- Sisters' Island to be managed for river access and nature preserve

Project Partners



Yes, I'd like to learn more about this project.

Name: _____

Contact Information: _____

Please make pledges to
The Friends of the Academy Preserve
using the enclosed pledge form

The Friends of The Academy Preserve
c/o Community Foundation of Monroe County
28 S. Macomb Street
Monroe, MI 48161
734.242.1976

Visit us at www.theacademypreserve.org